



Step into a
contemporary
community,
connected
to nature.

Introducing
The Emily
Condominium
Building

Campus Trails
by GREYSTONE

instagram: @campustrailshuntsville
web: campustrailshuntsville.ca

CAMPUS TRAILS - SOUTH -



Campus Trails by Greystone is a contemporary community connected to nature, in the heart of Huntsville, Muskoka.

Welcome to Campus Trails: where we are bringing our community-centric vision to life with stunning attention to detail.

Here, condo owners can surround themselves with natural forest and meandering walking trails, while enjoying all the modern amenities that condo life has to offer. Campus Trails community members live just a few short minutes from downtown Huntsville, and only steps away from the Campus Trails Medical Centre, boasting: a pharmacy, a dozen doctors in two family physician groups, a physio clinic, and One Kids Place (providing a full complement of health care services for children).

When we planned our approach to building Campus Trails, we used the landscape to our advantage. Each build is situated in a way that leaves the fantastic views of this area unobstructed by its neighbour – and, we've kept the building heights below the tree line, so that the natural shape of the horizon remains undisturbed.



On the edge of a forest in the heart of Huntsville, Muskoka, you will find our community of condominium buildings: meticulously designed to provide all the modern amenities you need, while fostering a deep connection to the surrounding landscape.



The Tom (our first condominium building constructed at Campus Trails) was recognized as one of the most innovative MultiFamily Low-Rise projects in North America. The honour was presented as part of the ICF Builder Awards: an international competition.

UNDER CONSTRUCTION
- NOW -



Introducing The Emily Condominium Building: Under Construction

- 4 stories & 39 modern suites
- Efficient ICF construction
- Large architectural windows
- Timber rafters & pine soffits
- Spacious balconies
- Suites with rooftop terraces & spacious lofts
- Underground parking & storage
- "Smart" automation, secure access & lobby features
- Wellness amenities
- Social rooms
- Healthcare steps away
- Walking/hiking trails
- Surrounding forest views
- Community greenhouse and garden
- Fire pit lounge area
- Pickle ball court
- Units range in size from 732 sq. ft. to 1,412 sq.ft. with chef kitchens
- Nestled in 32 acres of lush Muskoka woods and green space
- Steps away from the Campus Trails Wellness Centre, physician's office & health services
- Close and direct access to Fairy Lake, HWY 60 and Algonquin Park

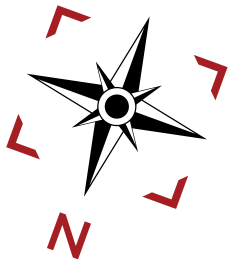
book an appointment: (705) 789-5001 | email: sales@greystonecommunities.ca | visit: www.campustrailshuntsville.ca



The Emily (under construction in August, 2023) with the town of Huntsville and beautiful Fairy Lake on the horizon. Here, we captured drone footage of concrete being poured for the walls of the second floor of the condominium building.

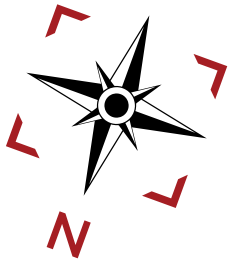


The Emily (under construction in July, 2023) surrounded by natural forest, with The Alexander behind it and The Tom in the distance. Our Campus Trails community is not a “down the road” plan. It is a current, tangible, growing project – and we have all our shovels in the ground.

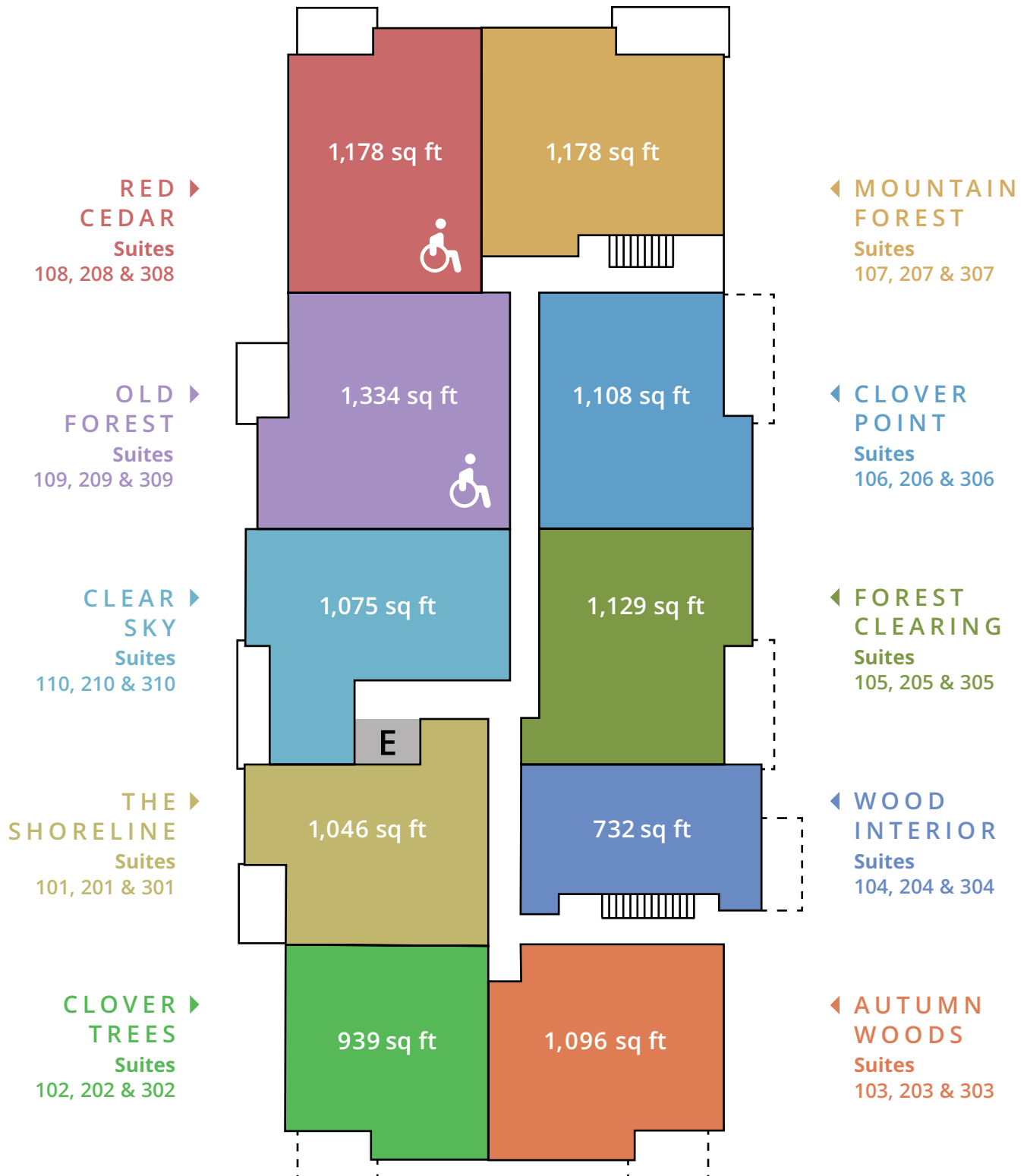


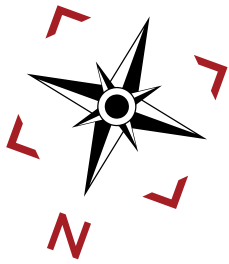
Parking & Social Rooms





1st, 2nd, & 3rd Floor





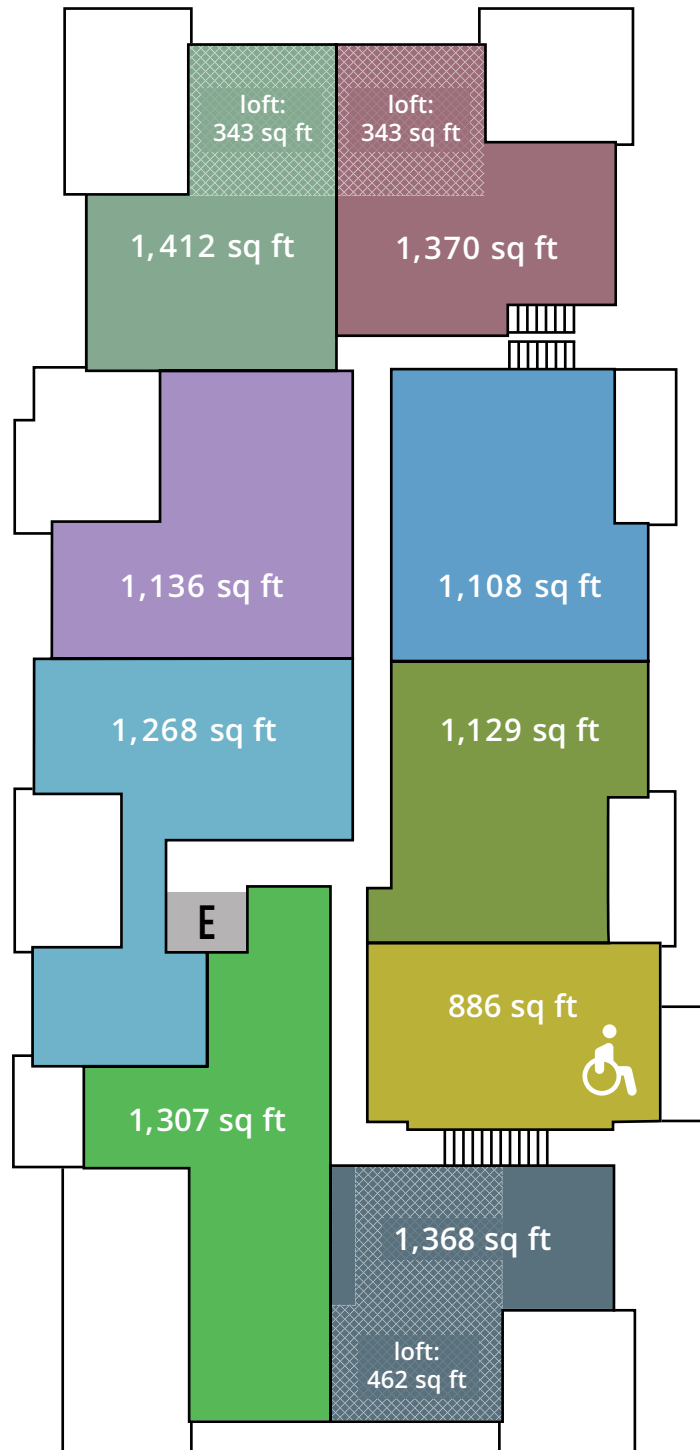
4th Floor

FOREST
LANDSCAPE
Suite 407
*loft incl.

BLUNDEN
HARBOUR
Suite 408

CHEMAINUS
BAY
Suite 409

YOUNG
TREE
Suite 401



◀ BIG
RAVEN
Suite 406
*loft incl.

◀ CLOVER
POINT
Suite 405

◀ FOREST
CLEARING
Suite 404

◀ CEDAR
SANCTUARY
Suite 403

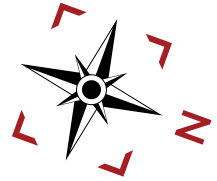
◀ THE
CARR
Suite 402
*loft incl.

The Shoreline

SUITES 101, 201 & 301 | 1,046 sq.ft.

1 BEDROOM + DEN - 2 BATHROOMS

NORTH & EAST FACING BALCONY: 97 sq.ft.

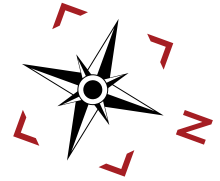
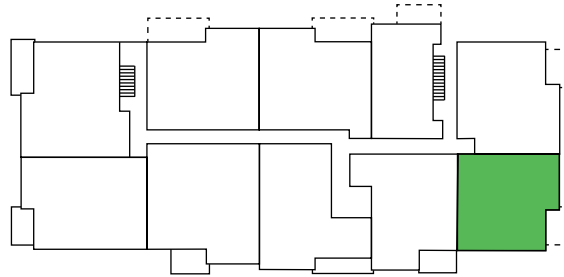


Clover Trees

SUITES 102, 202 & 302 | 939 sq.ft.

1 BEDROOM - 1 BATHROOM

NORTH & EAST FACING BALCONY: 99 sq.ft.

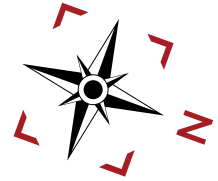
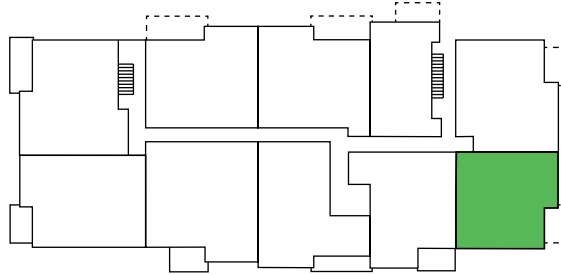


Clover Trees / 2nd Bedroom Option

SUITES 102, 202 & 302 | 939 sq.ft.

2 BEDROOMS - 1 BATHROOM

NORTH & EAST FACING BALCONY: 99 sq.ft.



book an appointment: (705) 789-5001 | **email:** sales@greystonecommunities.ca | **visit:** www.campustrailshuntsville.ca

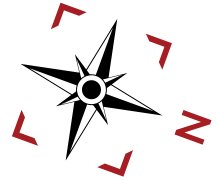
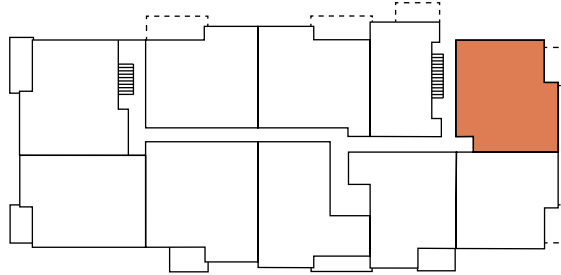
All areas and stated dimensions are approximate. Mechanical location, actual usable floor space, living area and square footage may vary from stated floor area. E. & O. E

Autumn Woods

SUITES 103, 203 & 303 | 1,096 sq.ft.

1 BEDROOM - 2 BATHROOMS

NORTH & WEST FACING BALCONY: 99 sq.ft.



book an appointment: (705) 789-5001 | **email:** sales@greystonecommunities.ca | **visit:** www.campustrailshuntsville.ca

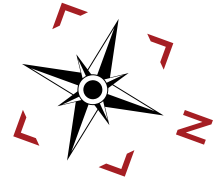
All areas and stated dimensions are approximate. Mechanical location, actual usable floor space, living area and square footage may vary from stated floor area. E. & O. E

Autumn Woods / 2nd Bedroom Option

SUITES 103, 203 & 303 | 1,096 sq.ft.

1 BEDROOM + DEN - 2 BATHROOMS

NORTH & WEST FACING BALCONY: 99 sq.ft.

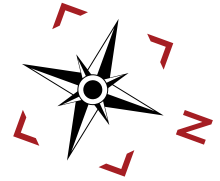
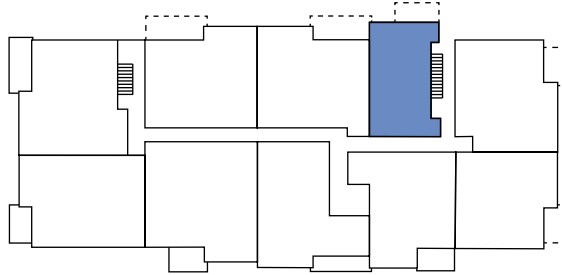


book an appointment: (705) 789-5001 | **email:** sales@greystonecommunities.ca | **visit:** www.campustrailshuntsville.ca

All areas and stated dimensions are approximate. Mechanical location, actual usable floor space, living area and square footage may vary from stated floor area. E. & O. E

Wood Interior

SUITES 104, 204 & 304 | 732 sq.ft.
1 BEDROOM - 1 BATHROOM
WEST FACING BALCONY: 99 sq.ft.



Wood Interior / Interior

SUITES 104, 204 & 304 | 732 sq.ft.

1 BEDROOM - 1 BATHROOM

WEST FACING BALCONY: 99 sq.ft.



book an appointment: (705) 789-5001 | **email:** sales@greystonecommunities.ca | **visit:** www.campustrailshuntsville.ca

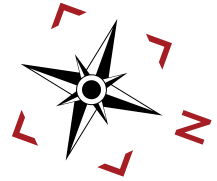
All areas and stated dimensions are approximate. Mechanical location, actual usable floor space, living area and square footage may vary from stated floor area. E. & O. E

Forest Clearing

SUITES 105, 205 & 305 | 1,129 sq.ft.

1 BEDROOM + DEN - 2 BATHROOMS

WEST FACING BALCONY: 147 sq.ft.

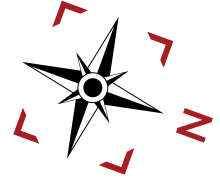


Forest Clearing / 2nd Bedroom Option

SUITES 105, 205 & 305 | 1,129 sq.ft.

2 BEDROOMS - 2 BATHROOMS

WEST FACING BALCONY: 147 sq.ft.

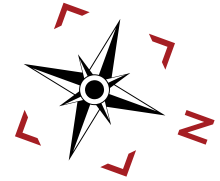
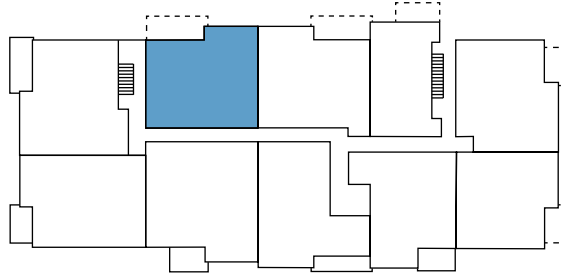


Clover Point

SUITES 106, 206 & 306 | 1,108 sq.ft.

1 BEDROOM + DEN - 2 BATHROOMS

SOUTH & WEST FACING BALCONY: 163 sq.ft.



book an appointment: (705) 789-5001 | **email:** sales@greystonecommunities.ca | **visit:** www.campustrailshuntsville.ca

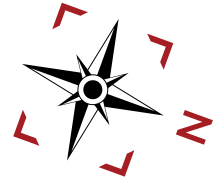
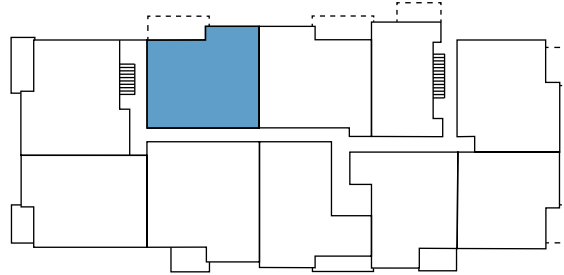
All areas and stated dimensions are approximate. Mechanical location, actual usable floor space, living area and square footage may vary from stated floor area. E. & O. E

Clover Point / 2nd Bedroom Option

SUITES 106, 206 & 306 | 1,108 sq.ft.

2 BEDROOMS - 2 BATHROOMS

SOUTH & WEST FACING BALCONY: 163 sq.ft.

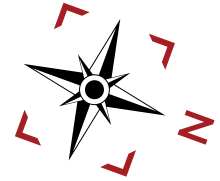
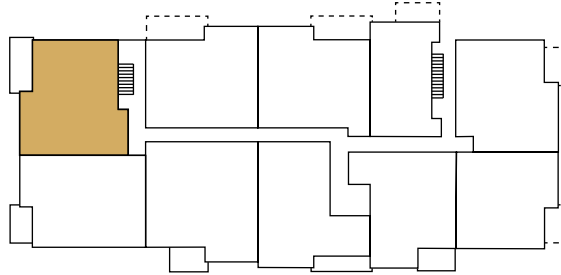


book an appointment: (705) 789-5001 | **email:** sales@greystonecommunities.ca | **visit:** www.campustrailshuntsville.ca

All areas and stated dimensions are approximate. Mechanical location, actual usable floor space, living area and square footage may vary from stated floor area. E. & O. E

Mountain Forest

SUITES 107, 207 & 307 | 1,178 sq.ft.
2 BEDROOMS + DEN - 2 BATHROOMS
SOUTH FACING BALCONY: 147 sq.ft.



book an appointment: (705) 789-5001 | **email:** sales@greystonecommunities.ca | **visit:** www.campustrailshuntsville.ca

All areas and stated dimensions are approximate. Mechanical location, actual usable floor space, living area and square footage may vary from stated floor area. E. & O. E

Mountain Forest / Interior

SUITES 107, 207 & 307 | 1,178 sq.ft.
2 BEDROOMS + DEN - 2 BATHROOMS
SOUTH FACING BALCONY: 147 sq.ft.

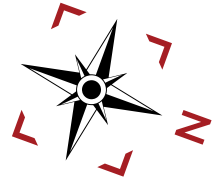
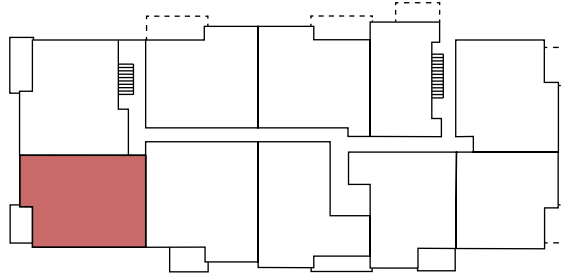


book an appointment: (705) 789-5001 | **email:** sales@greystonecommunities.ca | **visit:** www.campustrailshuntsville.ca

All areas and stated dimensions are approximate. Mechanical location, actual usable floor space, living area and square footage may vary from stated floor area. E. & O. E

Red Cedar

SUITES 108, 208 & 308 | 1,178 sq.ft.
1 BEDROOMS + DEN - 2 BATHROOMS
SOUTH FACING BALCONY: 99 sq.ft.



book an appointment: (705) 789-5001 | **email:** sales@greystonecommunities.ca | **visit:** www.campustrailshuntsville.ca

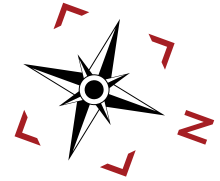
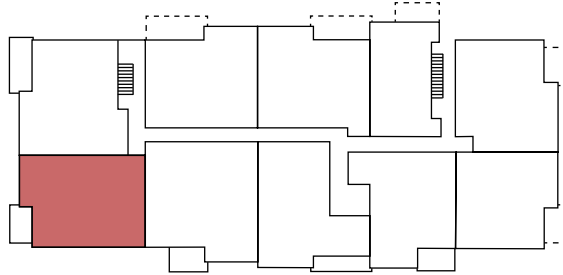
All areas and stated dimensions are approximate. Mechanical location, actual usable floor space, living area and square footage may vary from stated floor area. E. & O. E.

Red Cedar / 2nd Bedroom Option

SUITES 108, 208 & 308 | 1,178 sq.ft.

2 BEDROOMS - 2 BATHROOMS

SOUTH FACING BALCONY: 99 sq.ft.

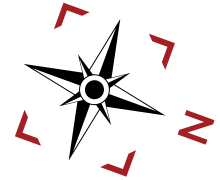
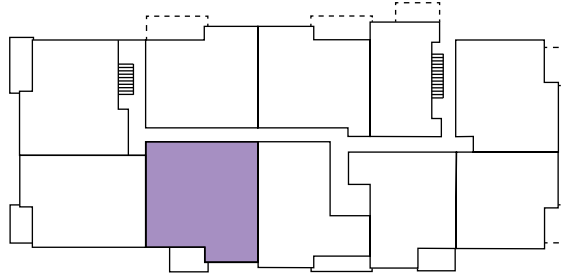


book an appointment: (705) 789-5001 | email: sales@greystonecommunities.ca | visit: www.campustrailshuntsville.ca

All areas and stated dimensions are approximate. Mechanical location, actual usable floor space, living area and square footage may vary from stated floor area. E. & O. E

Old Forest

SUITES 109, 209 & 309 | 1,334 sq.ft.
1 BEDROOM + DEN - 2 BATHROOMS
NORTHEAST FACING BALCONY: 97 sq.ft.



book an appointment: (705) 789-5001 | **email:** sales@greystonecommunities.ca | **visit:** www.campustrailshuntsville.ca

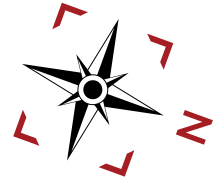
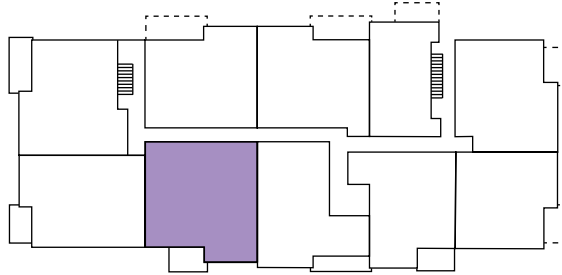
All areas and stated dimensions are approximate. Mechanical location, actual usable floor space, living area and square footage may vary from stated floor area. E. & O. E

Old Forest / 2nd Bedroom Option

SUITES 109, 209 & 309 | 1,334 sq.ft.

2 BEDROOMS + DEN - 2 BATHROOMS

NORTHEAST FACING BALCONY: 97 sq.ft.



book an appointment: (705) 789-5001 | **email:** sales@greystonecommunities.ca | **visit:** www.campustrailshuntsville.ca

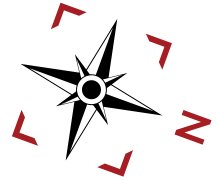
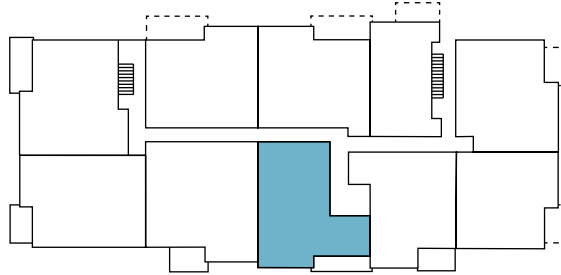
All areas and stated dimensions are approximate. Mechanical location, actual usable floor space, living area and square footage may vary from stated floor area. E. & O. E

Clear Sky

SUITES 110, 210 & 310 | 1,075 sq.ft.

1 BEDROOM + DEN - 2 BATHROOMS

NORTHEAST FACING BALCONY: 107 sq.ft.



Clear Sky / Interior

SUITES 110, 210 & 310 | 1,075 sq.ft.

1 BEDROOM + DEN - 2 BATHROOMS

NORTHEAST FACING BALCONY: 107 sq.ft.



book an appointment: (705) 789-5001 | **email:** sales@greystonecommunities.ca | **visit:** www.campustrailshuntsville.ca

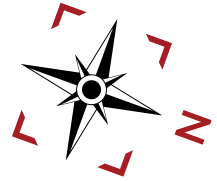
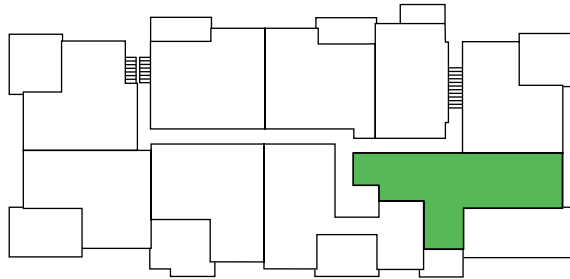
All areas and stated dimensions are approximate. Mechanical location, actual usable floor space, living area and square footage may vary from stated floor area. E. & O. E

Young Tree

SUITE 401 | 1,307 sq.ft.

2 BEDROOMS + DEN - 2 BATHROOMS

NORTH & EAST FACING BALCONY: 612 sq.ft.



book an appointment: (705) 789-5001 | **email:** sales@greystonecommunities.ca | **visit:** www.campustrailshuntsville.ca

All areas and stated dimensions are approximate. Mechanical location, actual usable floor space, living area and square footage may vary from stated floor area. E. & O. E.

Young Tree / Interior

SUITE 401 | 1,307 sq.ft.

2 BEDROOMS + DEN - 2 BATHROOMS

NORTH & EAST FACING BALCONY: 612 sq.ft.



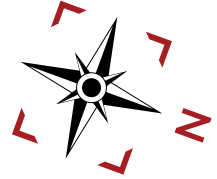
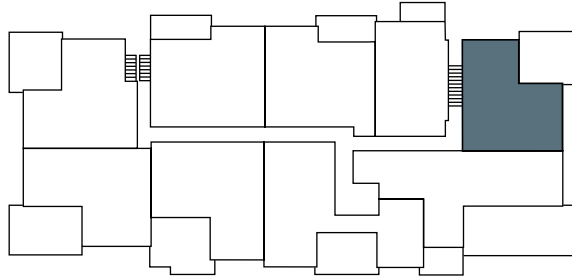
book an appointment: (705) 789-5001 | **email:** sales@greystonecommunities.ca | **visit:** www.campustrailshuntsville.ca

All areas and stated dimensions are approximate. Mechanical location, actual usable floor space, living area and square footage may vary from stated floor area. E. & O. E.

The Carr / Main Floor

SUITE 402 | 1,368 sq.ft. INCLUDING LOFT

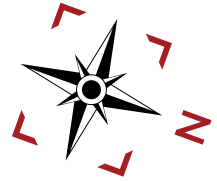
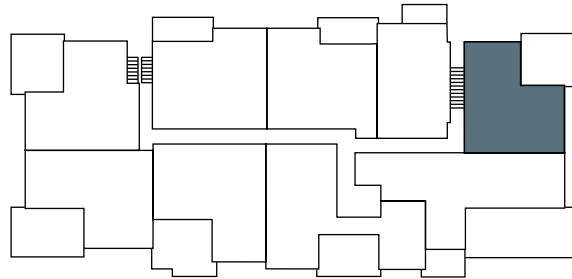
1 BEDROOM + LOFT BEDROOM/DEN - 2 BATHROOMS + TIMBER RAFTER DETAILS
NORTHWEST FACING BALCONY: 330 sq.ft.



The Carr / Loft

SUITE 402 | 1,368 sq.ft. INCLUDING LOFT

1 BEDROOM + LOFT BEDROOM/DEN - 2 BATHROOMS + TIMBER RAFTER DETAILS
NORTHWEST FACING BALCONY: 330 sq.ft.



book an appointment: (705) 789-5001 | **email:** sales@greystonecommunities.ca | **visit:** www.campustrailshuntsville.ca

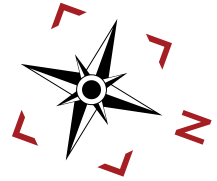
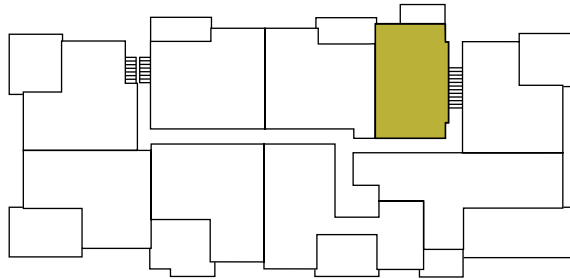
All areas and stated dimensions are approximate. Mechanical location, actual usable floor space, living area and square footage may vary from stated floor area. E. & O. E

Cedar Sanctuary

SUITE 403 | 886 sq.ft.

1 BEDROOM + DEN - 1 BATHROOM

WEST FACING BALCONY: 100 sq.ft.



book an appointment: (705) 789-5001 | **email:** sales@greystonecommunities.ca | **visit:** www.campustrailshuntsville.ca

All areas and stated dimensions are approximate. Mechanical location, actual usable floor space, living area and square footage may vary from stated floor area. E. & O. E

Cedar Sanctuary / Interior

SUITE 403 | 886 sq.ft.

1 BEDROOM + DEN - 1 BATHROOM

WEST FACING BALCONY: 100 sq.ft.



book an appointment: (705) 789-5001 | **email:** sales@greystonecommunities.ca | **visit:** www.campustrailshuntsville.ca

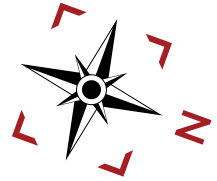
All areas and stated dimensions are approximate. Mechanical location, actual usable floor space, living area and square footage may vary from stated floor area. E. & O. E

Forest Clearing

SUITE 404 | 1,129 sq.ft.

1 BEDROOM + DEN - 2 BATHROOMS

WEST FACING BALCONY: 147 sq.ft.

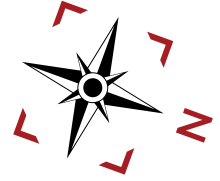


book an appointment: (705) 789-5001 | **email:** sales@greystonecommunities.ca | **visit:** www.campustrailshuntsville.ca

All areas and stated dimensions are approximate. Mechanical location, actual usable floor space, living area and square footage may vary from stated floor area. E. & O. E

Forest Clearing / 2nd Bedroom Option

SUITE 404 | 1,129 sq.ft.
2 BEDROOMS - 2 BATHROOMS
WEST FACING BALCONY: 147 sq.ft.

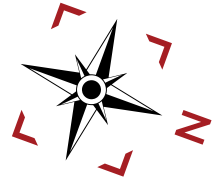
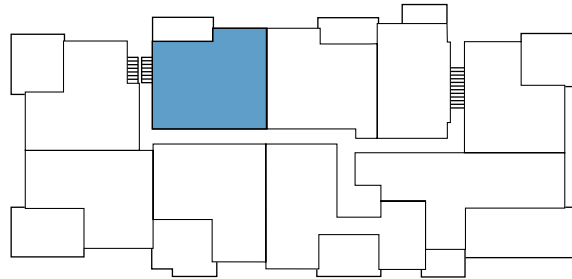


Clover Point

SUITE 405 | 1,108 sq.ft.

1 BEDROOM + DEN - 2 BATHROOMS

SOUTH & WEST FACING BALCONY: 163 sq.ft.



book an appointment: (705) 789-5001 | **email:** sales@greystonecommunities.ca | **visit:** www.campustrailshuntsville.ca

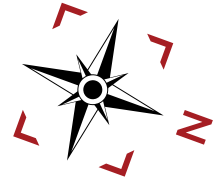
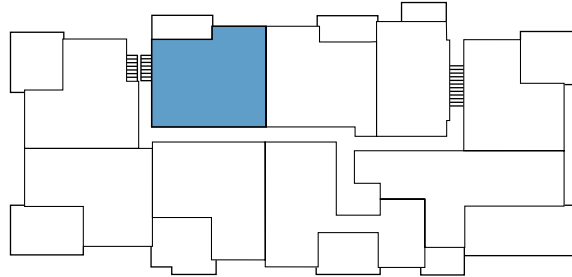
All areas and stated dimensions are approximate. Mechanical location, actual usable floor space, living area and square footage may vary from stated floor area. E. & O. E

Clover Point / 2nd Bedroom Option

SUITE 405 | 1,108 sq.ft.

2 BEDROOMS - 2 BATHROOMS

SOUTH & WEST FACING BALCONY: 163 sq.ft.



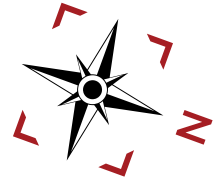
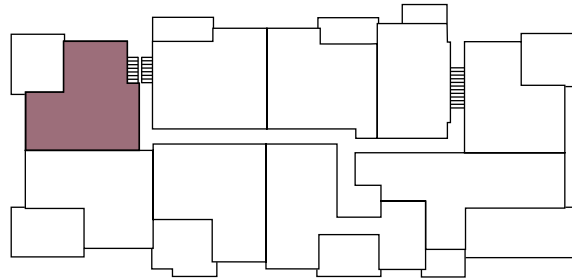
book an appointment: (705) 789-5001 | **email:** sales@greystonecommunities.ca | **visit:** www.campustrailshuntsville.ca

All areas and stated dimensions are approximate. Mechanical location, actual usable floor space, living area and square footage may vary from stated floor area. E. & O. E

Big Raven / Main Floor

SUITE 406 | 1,370 sq.ft. INCLUDING LOFT

1 BEDROOM + LOFT BEDROOM/DEN - 2.5 BATHROOMS + TIMBER RAFTER DETAILS
SOUTH FACING BALCONY: 340 sq.ft.



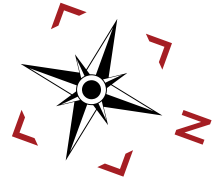
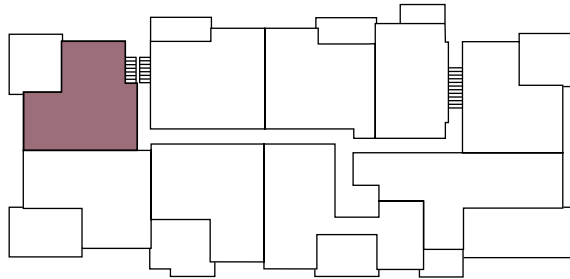
book an appointment: (705) 789-5001 | **email:** sales@greystonecommunities.ca | **visit:** www.campustrailshuntsville.ca

All areas and stated dimensions are approximate. Mechanical location, actual usable floor space, living area and square footage may vary from stated floor area. E. & O. E

Big Raven / Loft

SUITE 406 | 1,370 sq.ft. INCLUDING LOFT

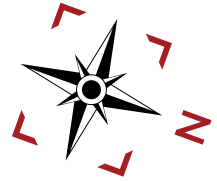
1 BEDROOM + LOFT BEDROOM/DEN - 2.5 BATHROOMS + TIMBER RAFTER DETAILS
SOUTH FACING BALCONY: 340 sq.ft.



Forest Landscape / Main Floor

SUITE 407 | 1,412 sq.ft. INCLUDING LOFT

1 BEDROOM + LOFT BEDROOM/DEN - 2 BATHROOMS + TIMBER RAFTER DETAILS
SOUTHEAST FACING BALCONY: 390 sq.ft.



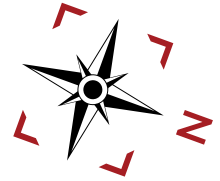
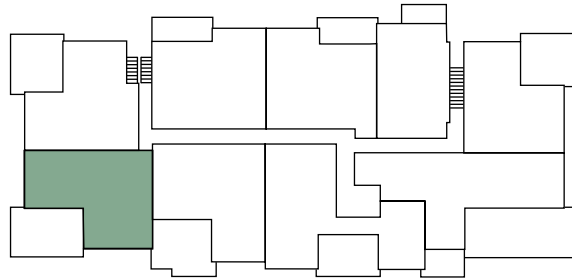
book an appointment: (705) 789-5001 | **email:** sales@greystonecommunities.ca | **visit:** www.campustrailshuntsville.ca

All areas and stated dimensions are approximate. Mechanical location, actual usable floor space, living area and square footage may vary from stated floor area. E. & O. E

Forest Landscape / Loft

SUITE 407 | 1,412 sq.ft. INCLUDING LOFT

1 BEDROOM + LOFT BEDROOM/DEN - 2 BATHROOMS + TIMBER RAFTER DETAILS
SOUTHEAST FACING BALCONY: 390 sq.ft.

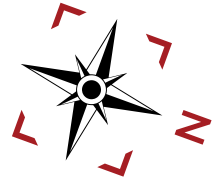
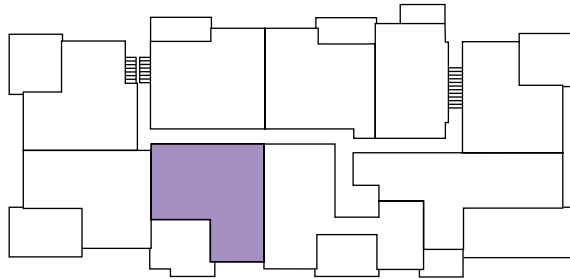


Blunden Harbour

SUITE 408 | 1,136 sq.ft.

2 BEDROOMS - 2 BATHROOMS

EAST FACING BALCONY: 350 sq.ft.



Blunden Harbour / Interior

SUITE 408 | 1,136 sq.ft.

2 BEDROOMS - 2 BATHROOMS

EAST FACING BALCONY: 350 sq.ft.



book an appointment: (705) 789-5001 | **email:** sales@greystonecommunities.ca | **visit:** www.campustrailshuntsville.ca

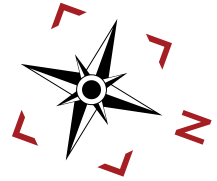
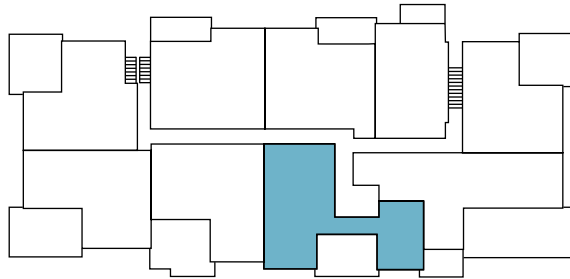
All areas and stated dimensions are approximate. Mechanical location, actual usable floor space, living area and square footage may vary from stated floor area. E. & O. E

Chemainus Bay

SUITE 409 | 1,268 sq.ft.

2 BEDROOMS - 2 BATHROOMS

EAST FACING BALCONY: 250 sq.ft.



book an appointment: (705) 789-5001 | **email:** sales@greystonecommunities.ca | **visit:** www.campustrailshuntsville.ca

All areas and stated dimensions are approximate. Mechanical location, actual usable floor space, living area and square footage may vary from stated floor area. E. & O. E

Chemainus Bay / Interior

SUITE 409 | 1,268 sq.ft.

2 BEDROOMS - 2 BATHROOMS

EAST FACING BALCONY: 250 sq.ft.



book an appointment: (705) 789-5001 | **email:** sales@greystonecommunities.ca | **visit:** www.campustrailshuntsville.ca

All areas and stated dimensions are approximate. Mechanical location, actual usable floor space, living area and square footage may vary from stated floor area. E. & O. E

Interested in Interiors? Step into our Design Centre...

For some owners, choosing the finishing touches for their freshly built and purchased condo is their favourite part of the buying process – and we aim to make it enjoyable!

At Campus Trails, your expansive windows will let in cascades of natural light and forest vistas. Higher ceilings and open concept floor plans will make rooms feel larger; and your balcony will bring you to the edge of the forest, as if you're living in a treehouse.

These are the incredible features that all of our condos share – but what about **the individualized finishing touches** that need to be made, to make it feel like you're "home?"

From Traditional, to Transitional, or Modern Contemporary, we are here to help you customize your suite with a Selection of Upgrade Options to reflect your personal style.

When you purchase your condo at Campus Trails, our design professionals will help you navigate the options available to you for your interior finishes, and carefully walk you through the exciting creative process of designing the living space of your dreams.



*Pictured here is the interior of our Campus Trails Design Centre



...let our consultants help you with the finishing touches.

Suite Finishes

- Selection of Builder's Packages for finishes
- Consultation with design team for custom features
- New appliances – fridge, stove, dishwasher, microwave with integral exhaust hood and washer + dryer
- Tall baseboards, window casings, and beautiful details
- Flooring options from builder specifications
- Quality architectural hardware in many colour finishes
- Quality light fixtures
- Smart system for building access, communication, high speed internet, telephone, and automation
- Custom millwork closet organization system available

Chef's Kitchen

- Beautiful cabinetry, designed for the gourmet chef to entertain – with island or peninsula and breakfast bar (where shown in suite layouts)
- Quality faucets
- Double stainless steel sink
- Multiple selection options from Builder's Packages

Luxurious Bathroom Finishes

- Custom designed vanity
- Large mirror over vanities
- Full selection of modern fixtures to match your personal style
- Exhaust system in all washrooms coordinated with HRV for efficient energy conservation

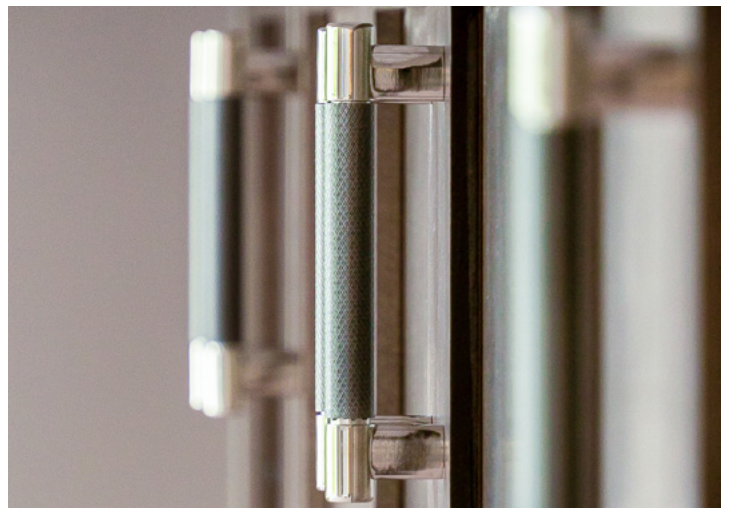
Samples from our Selection of Upgrade Options

Let us help you navigate your options, and choose the custom finishes that will make your condo feel like home. **This is just a small selection from our upgrade options:**



LUXURY LIGHTING

UPGRADED HARDWARE



*Pictured here are some interior finishing options chosen by condo owners in The Alexander



CUSTOM CABINETRY

SPECIALIZED PLUMBING FIXTURES



*Pictured here are some interior finishing options chosen by condo owners in The Alexander



BACKSPASH TILE OPTION

Spice Rack

CUSTOM CABINETRY INTERIOR COMPONENTS

Pots & Pans Drawers



*Pictured here are some interior finishing options chosen by condo owners in The Alexander



CUSTOM APPLIANCE PACKAGES & MORE...

Custom Wall Shiplap Siding Accents

Custom Countertop Colours / Patterns



*Pictured here are some interior finishing options chosen by condo owners in The Alexander



Located North of Hwy. 60 & Muskoka Rd. 3 intersection, one minute north of the Huntsville Hospital entrance, and 1km from downtown Huntsville.

Direct access to Fairy Lake, with Algonquin Park, Deerhurst, and Grandview Golf Course only minutes away.

book an appointment: (705) 789-5001

email: sales@greystonecommunities.ca

visit: www.campustrailshuntsville.ca

instagram: @campustrailshuntsville

web: campustrailshuntsville.ca

